



**HAMPTON GROVE**



A DEVELOPMENT BY PRARCTIS





**“Where modern living meets timeless elegance in the heart of Abuja.”**





## INTRODUCTION

---

Welcome to Hampton Grove, an exclusive residential estate thoughtfully designed to redefine modern living in the Kaura District of Abuja. This premium development harmonizes luxury, comfort, and functionality, offering residents an environment that balances sophistication with convenience.

At the heart of the estate lies a grand gatehouse and a contemporary shopping mall, creating a welcoming entrance while providing everyday essentials within reach. Hampton Grove offers a diverse mix of residences tailored to different lifestyle needs — from elegant 5-bedroom and 4-bedroom townhouses to stylish 2-bedroom and 3-bedroom apartments, each crafted with meticulous attention to detail.

More than just homes, Hampton Grove is a community designed to nurture family living, promote relaxation, and enhance quality of life. With its blend of architectural elegance and modern amenities, it stands as a true reflection of comfort and prestige in Abuja's urban landscape.

---



## KAURA District

---

Kaura District is one of Abuja's most sought-after residential enclaves, known for its balance of serenity, accessibility, and urban convenience. Strategically located within the Federal Capital Territory, Kaura is surrounded by key districts such as Jabi, Wuye, and Gwarinpa, making it easily connected to the city's commercial and leisure hubs.

The district is characterized by well-planned layouts, good infrastructure, and a growing mix of residential and commercial developments. With its proximity to major road networks, shopping centers, schools, and healthcare facilities, Kaura has become a preferred destination for modern families and professionals seeking a secure and vibrant community.

For Hampton Grove, this prime location provides residents with the ideal blend of exclusivity and accessibility, ensuring comfort without compromise.

---

# SITE PLAN

## Hampton Grove Residences

FINCH - 2 BEDROOM APARTMENT WITH DOMESTIC QUARTERS ENSUITE	
DESCRIPTION	FLOOR AREA (sqm)
GROUND FLOOR	129
UPPER FLOORS	132

ROBIN - 3 BEDROOM APARTMENT WITH DOMESTIC QUARTERS ENSUITE	
DESCRIPTION	FLOOR AREA (sqm)
GROUND FLOOR	207
UPPER FLOORS	232

FALCON - 4 BEDROOM TOWNHOUSE WITH DOMESTIC QUARTERS ENSUITE	
DESCRIPTION	FLOOR AREA (sqm)
GROUND FLOOR	85
FIRST FLOOR	122
SECOND FLOOR	121
TOTAL	328

EAGLE - 5 BEDROOM TOWNHOUSE WITH DOMESTIC QUARTERS ENSUITE	
DESCRIPTION	FLOOR AREA (sqm)
GROUND FLOOR	109
FIRST FLOOR	131
SECOND FLOOR	133
TOTAL	373





# GALLERIA AND GATE HOUSE





# GALLERIA AND GATE HOUSE

FLOOR PLAN





GALLERIA AND GATE  
HOUSE

3D VIEW





GALLERIA AND GATE  
HOUSE

3D VIEW





GALLERIA AND GATE  
HOUSE

3D VIEW





GALLERIA AND GATE  
HOUSE

3D VIEW





GALLERIA AND GATE  
HOUSE

3D VIEW





GALLERIA AND GATE  
HOUSE

3D VIEW





GALLERIA AND GATE  
HOUSE

3D VIEW





GALLERIA AND GATE  
HOUSE

3D VIEW





# EAGLE

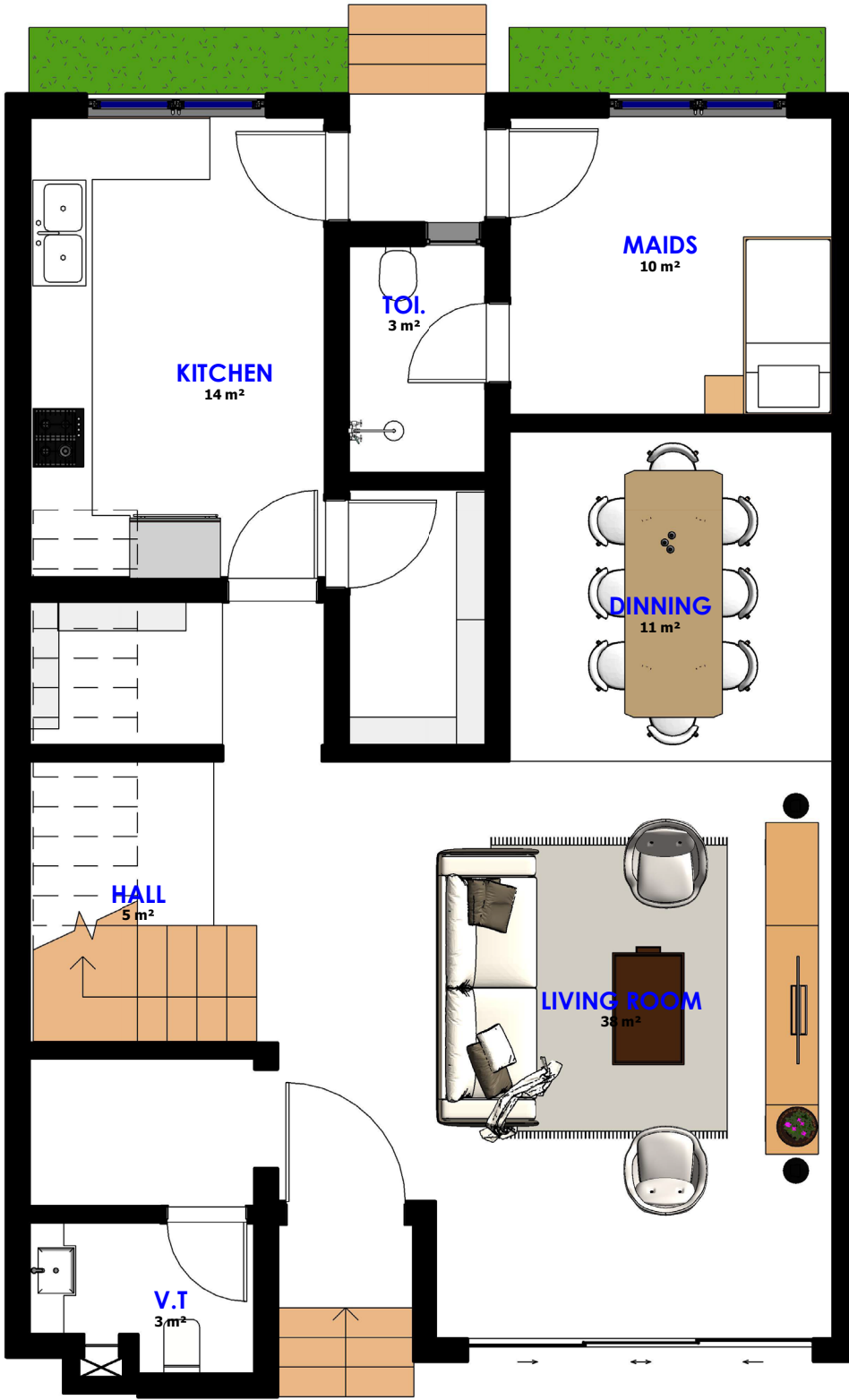
## 5 BEDROOM TOWNHOUSES

  
**HAMPTON GROVE**  
RESIDENCES



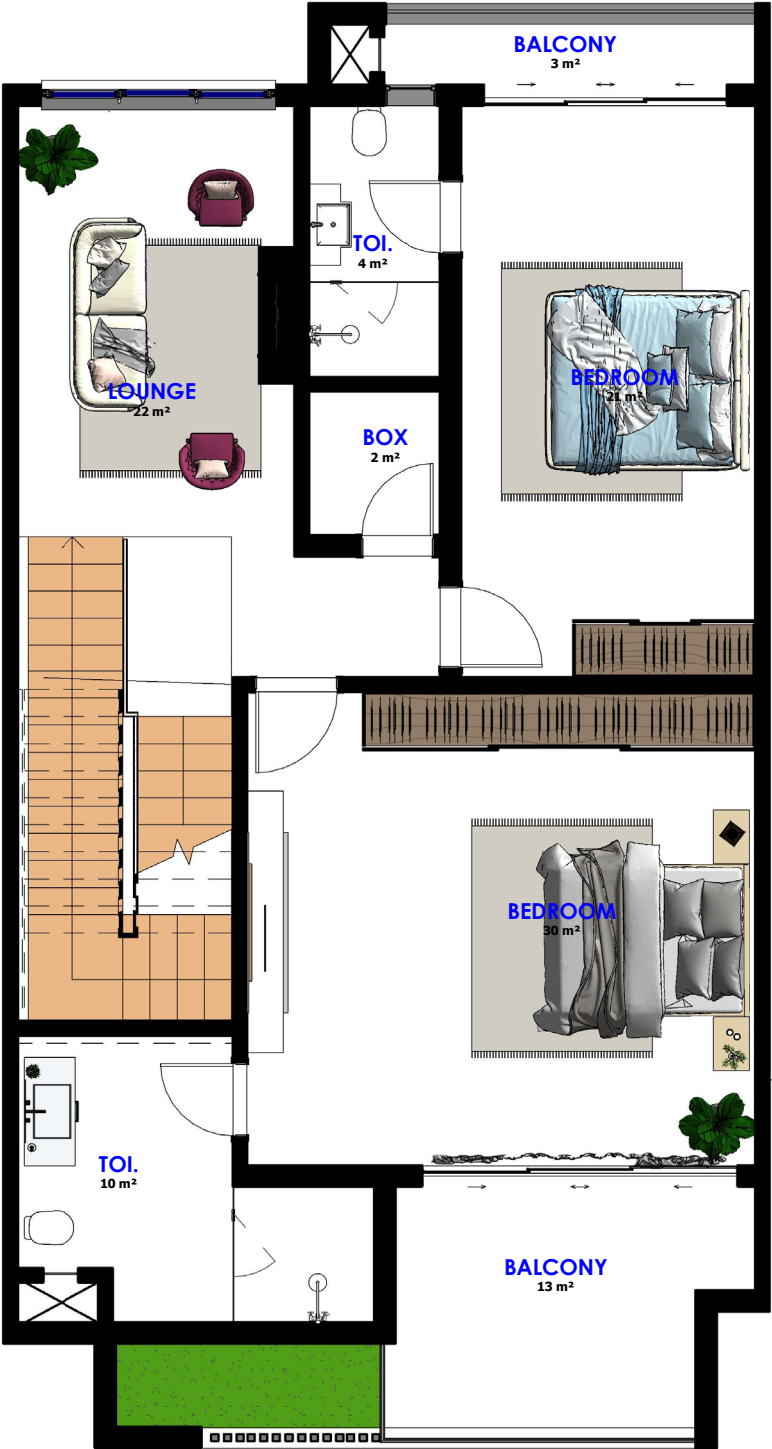


EAGLE  
GROUND FLOOR PLAN



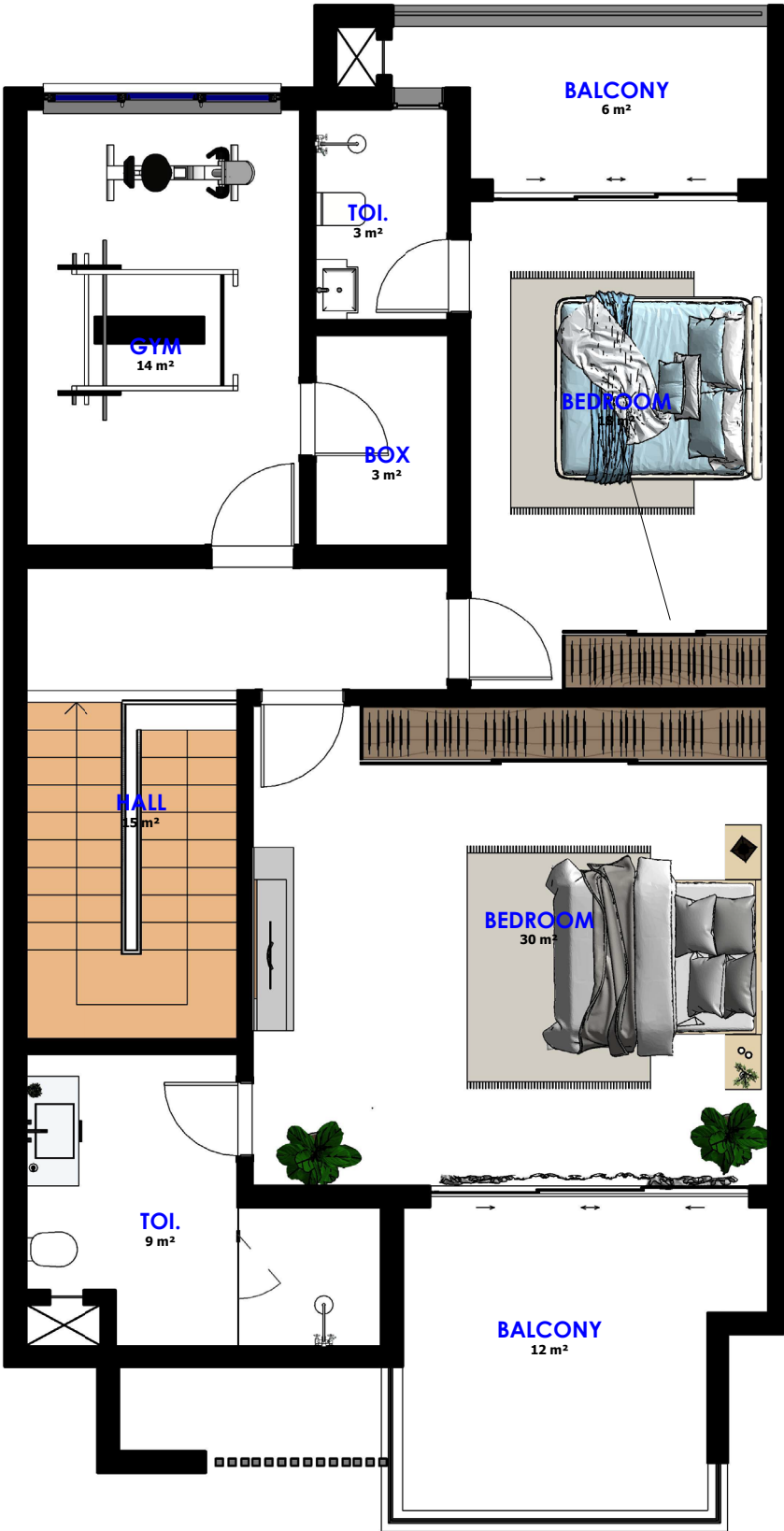


EAGLE  
FIRST FLOOR PLAN





EAGLE  
SECOND FLOOR PLAN





EAGLE  
3D VIEW





EAGLE  
3D VIEW





# EAGLE

3D VIEW





EAGLE  
3D VIEW





**EAGLE**  
3D VIEW





**EAGLE**  
3D VIEW





EAGLE  
3D VIEW





# FALCON

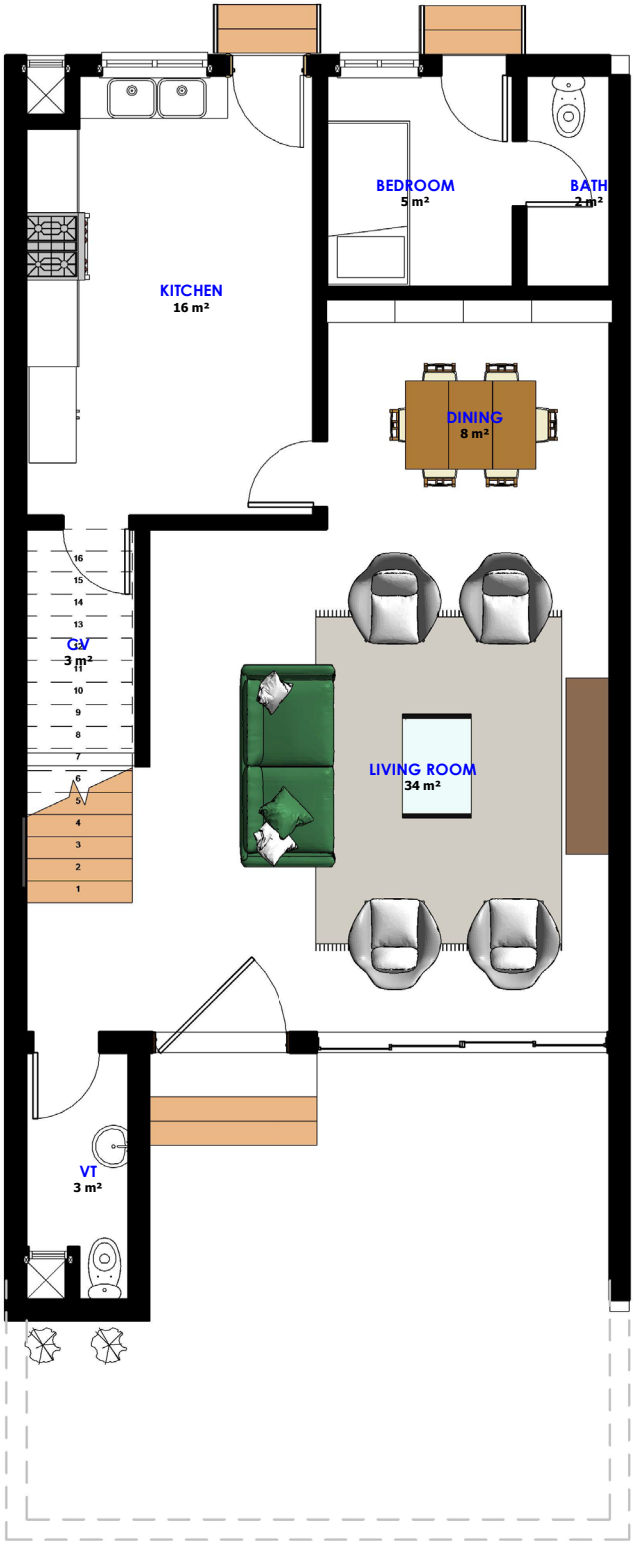
## 4 BEDROOM TOWNHOUSES

  
**HAMPTON GROVE**  
RESIDENCES



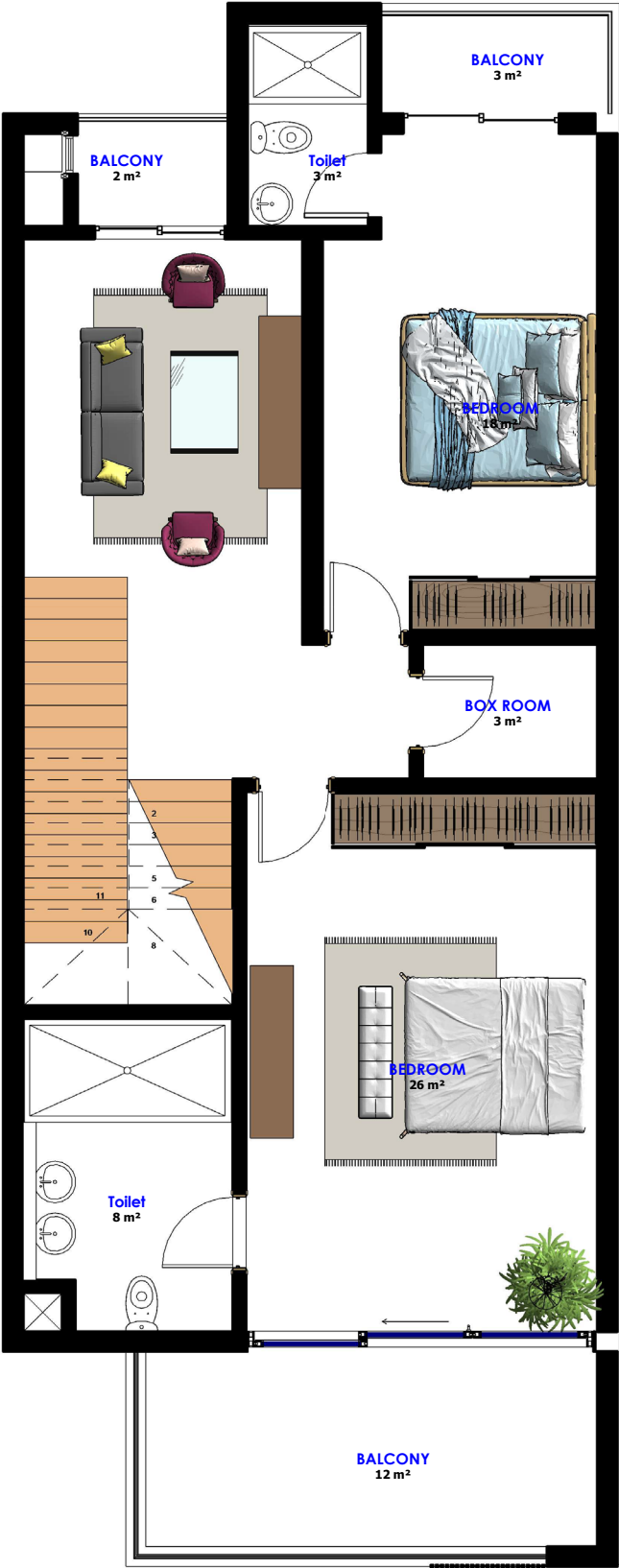


FALCON  
GROUND FLOOR PLAN



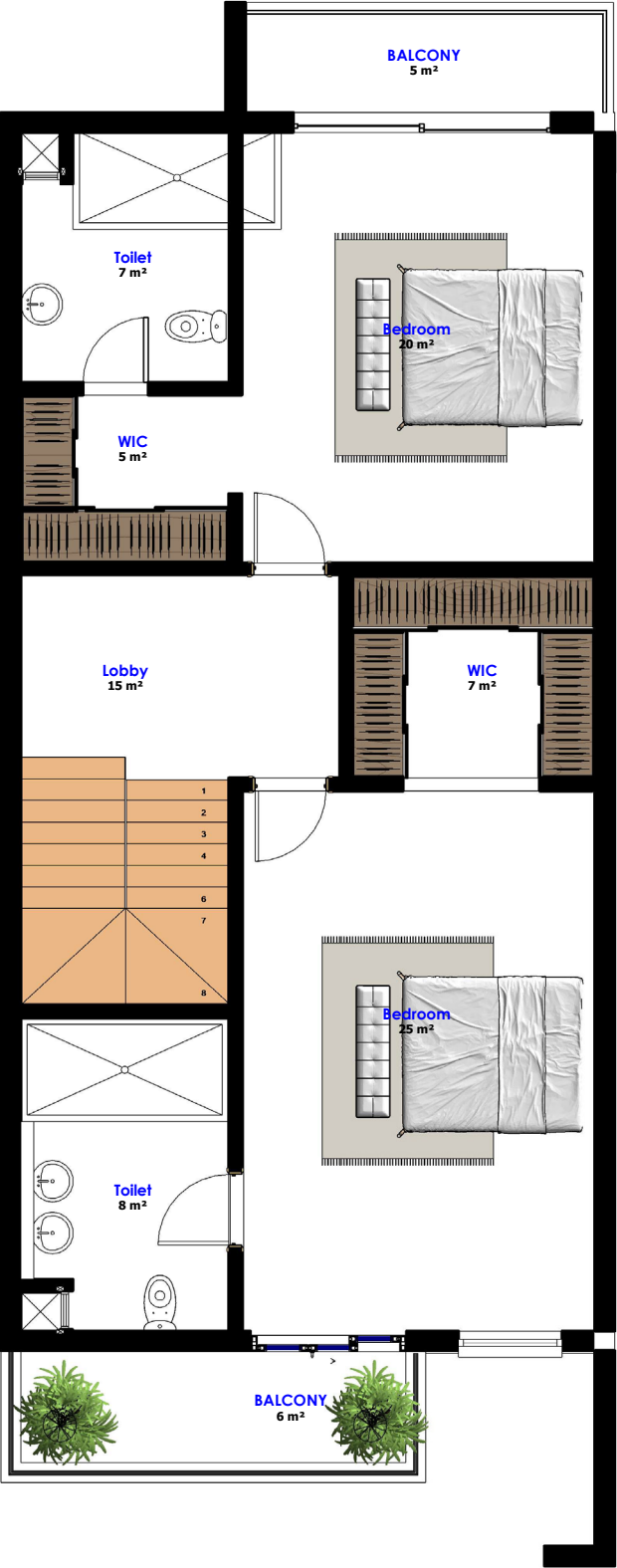


FALCON  
FIRST FLOOR PLAN





FALCON  
SECOND FLOOR PLAN





FALCON  
3D VIEW





FALCON  
3D VIEW





FALCON  
3D VIEW





FALCON  
3D VIEW





**FALCON**  
3D VIEW





**FALCON**  
3D VIEW





ROBIN

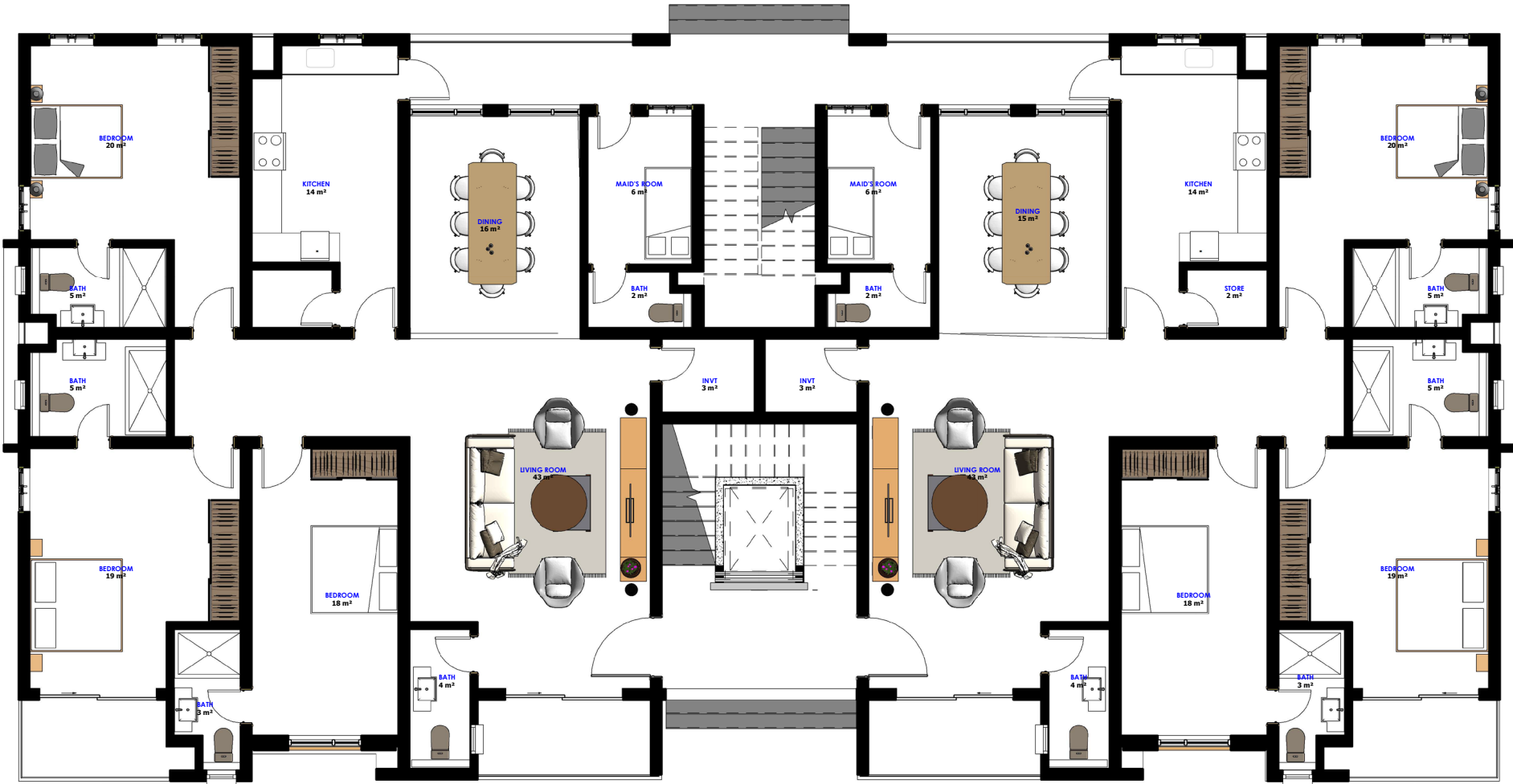
3 BEDROOM APARTMENT





ROBIN

FLOOR PLAN





ROBIN  
3D VIEW





ROBIN  
3D VIEW





ROBIN  
3D VIEW





ROBIN  
3D VIEW





# FINCH

2 BEDROOM APARTMENT





# FINCH

## FLOOR PLAN























# HAMPTON GROVE

A DEVELOPMENT BY PRARCTIS

